

AMIGA project: Quantification of the isolation of 950 CIG galaxies

Simon Verley
on behalf of the AMIGA team

Instituto de Astrofísica de Andalucía

Consejo Superior de Investigaciones Científicas



May 12th, 2009

Overview of the presentation

- 1 Introduction
 - Motivations
 - The AMIGA project
 - The Catalogue of Isolated Galaxies
- 2 Isolation study
 - Isolation criteria
 - Comparison samples
 - Redshifts
- 3 Conclusions

Influence of the environment

- Role of the environment in the formation and evolution of galaxies
- Properties of the ISM in isolated galaxies, and its relation to luminosity, morphology, star formation, nuclear activity
- Reference sample with minimum influence from the environment

ISM in isolated galaxies

AMIGA I-VII 2005-2009

Analysis of the Interstellar Medium of Isolated GALaxies

(AMIGA project)

- The Catalogue of Isolated Galaxies (CIG)
 - Positions [Leon & Verdes-Montenegro 2003]
 - Redshifts and distances [Verdes-Montenegro et al. 2005]
 - Morphologies [Sulentic et al. 2006; Durbala et al. 2008]
 - Optical luminosity function [Verdes-Montenegro et al. 2005]
 - Isolation [Verley et al. 2007a,b]
- ISM multi-wavelength study
 - H α [Verley et al. 2007c]
 - Far infrared [Lisenfeld et al. 2007]
 - Radio-continuum [Leon et al. 2008; Sabater et al. 2008]
 - Atomic gas [Espada et al. 2005; Espada 2006]
 - Molecular gas [Lisenfeld et al., in prep.]
- Public database
 - <http://www.amiga.iaa.es>

ISM in isolated galaxies

AMIGA I-VII 2005-2009

Analysis of the Interstellar Medium of Isolated GALaxies

(AMIGA project)

- The Catalogue of Isolated Galaxies (CIG)

- Positions
- Redshifts and distances
- Morphologies
- Optical luminosity function
- Isolation

GALAXIES IN ISOLATION:

EXPLORING NATURE VS. NURTURE

Talk: J. Sulentic

Talk: J. Sulentic

Talks: S. Verley, J. D. Santander-Vela

- ISM multi-wavelength study

- H α
- Far infrared
- Radio-continuum
- Atomic gas
- Molecular gas

Posters: G. Bergond et al., S. Verley et al.

Poster: B. Ocaña Flaquer et al.

Talk: J. Sabater

Talk: D. Espada

Posters: U. Lisenfeld et al., V. Martínez-Badenes et al.

- Public database

- <http://www.amiga.iaa.es>

The Catalogue of Isolated Galaxies (CIG)

Primary galaxies with angular major-axis diameter D_p are considered **isolated** if any neighbours with diameters D_i , $D_p/4 \leq D_i \leq 4D_p$ have an apparent angular separation R_{ip} , from the primary galaxy under consideration, greater than $20D_i$

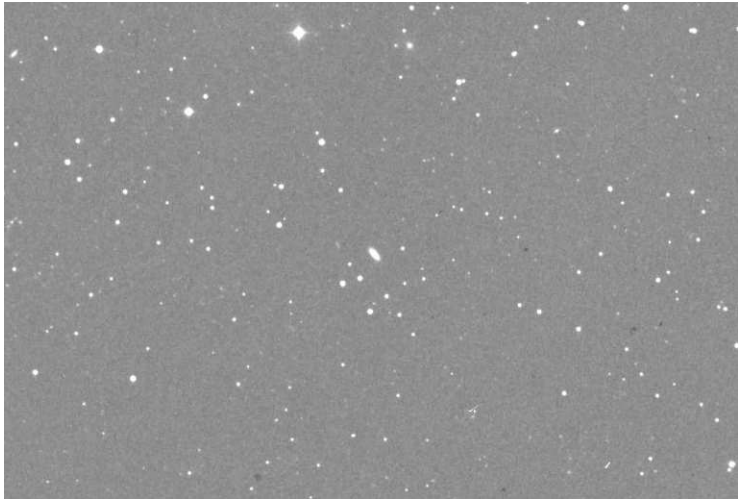
[Karachentseva, 1973]:

$$R_{ip} \geq 20 \times D_i$$
$$\frac{1}{4} \times D_p \leq D_i \leq 4 \times D_p$$

1050 galaxies (about **3%** of all the galaxies in the CGCG) [Zwicky et al., 1968]

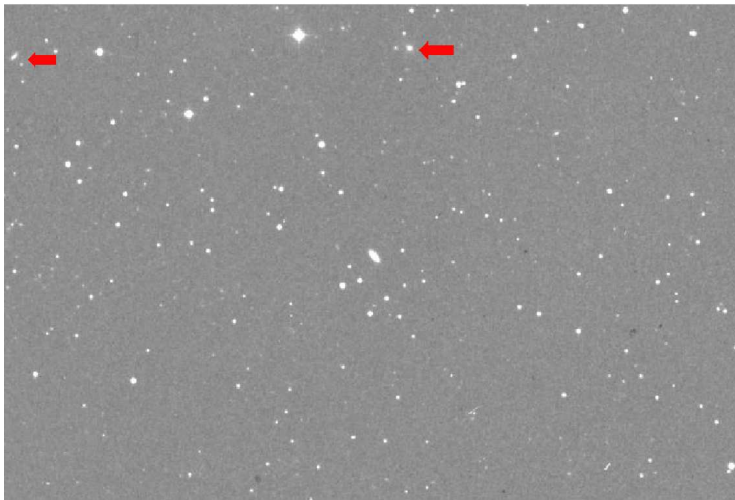
Isolation definition

Karachentseva 1973



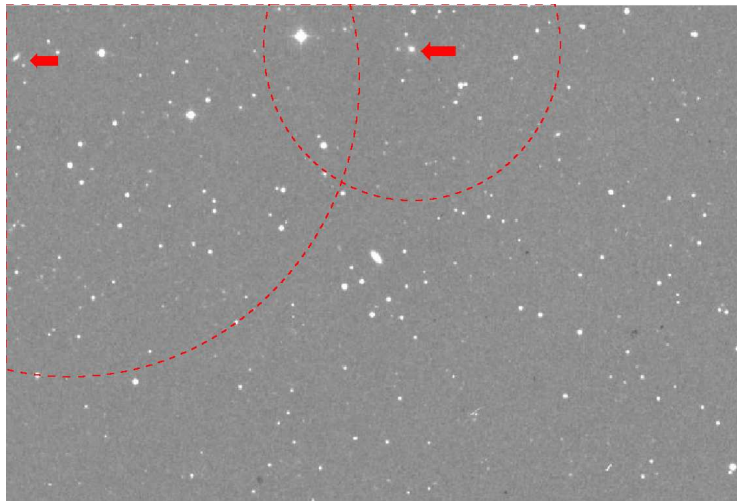
Isolation definition

Karachentseva 1973



Isolation definition

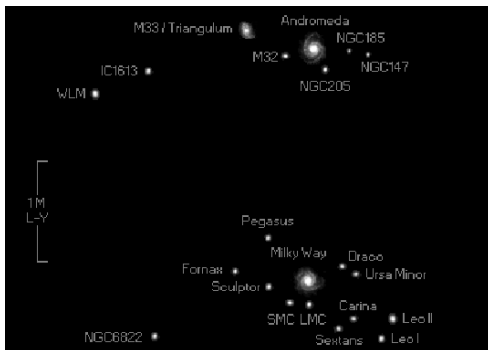
Karachentseva 1973



Local group

AMIGA-IV 2007, A&A, 470, 505

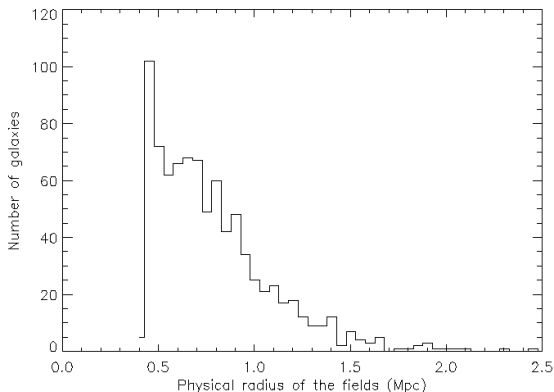
- **Primary galaxy: Milky Way: $D \approx 30$ kpc**
 - Andromeda: $D \approx 40$ kpc, dist. ≈ 725 kpc
 - M33: $D \approx 16$ kpc, dist. ≈ 840 kpc
 - Large Magellanic Cloud: $D \approx 9$ kpc, dist. ≈ 50 kpc



The AMIGA revision

AMIGA-IV 2007, A&A, 470, 505

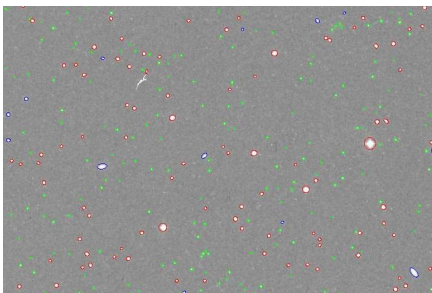
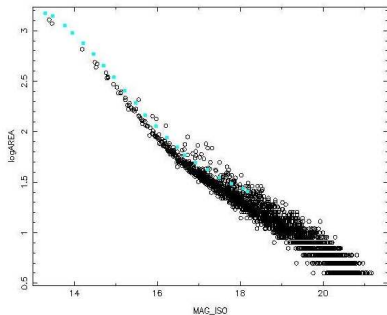
- concerns 950 CIGs ($V > 1500 \text{ km s}^{-1}$)
- minimum physical radius of 0.5 Mpc (3×10^9 years)
- squared fields: 55' (767), 110' (134), 165' (49)



Isolation pipeline

AMIGA-IV 2007, A&A, 470, 505

- POSS-I digitised plates (1.7 arcsec/pixel)
- SExtractor for the detection [Bertin & Arnouts, 1996]
- LMORPHO for the star/galaxy separation [Odewahn, 1995]
- POSS-II digitised plates (1.0 arcsec/pixel)



Isolation parameters

AMIGA-V 2007, A&A, 472, 121

~53 000 neighbours around 950 CIGs

- Local number density

[Casertano & Hut, 1985]

$$\eta_k = \frac{k-1}{V(r_k)}$$

with $V(r_k) = 4\pi r_k^3/3$, where r_k is the distance to the k^{th} nearest neighbour

- Tidal forces

[Dahari, 1984]

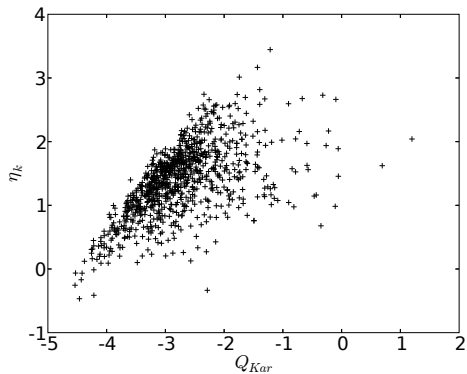
$$F_{\text{tidal}} \propto \frac{M_c \times \Delta R}{R^3} = \frac{M_c \times D_p}{S^3}$$

$$F_{\text{bind}} \propto \frac{M_p}{D_p^2}$$

$$Q \equiv \frac{F_{\text{tidal}}}{F_{\text{bind}}} \propto \left(\frac{M_c}{M_p}\right) \left(\frac{D_p}{S}\right)^3 \propto \frac{(\sqrt{D_p D_c})^3}{S^3}$$

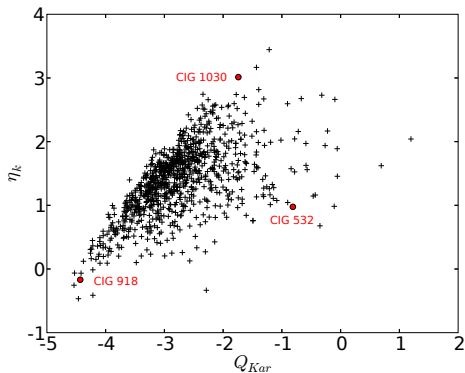
Complementarity

AMIGA-V 2007, A&A, 472, 121



Complementarity

AMIGA-V 2007, A&A, 472, 121

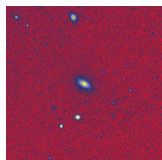


- **CIG 918**: 6 neighbours, all similar sizes, none violates
- **CIG 1030**: 131 neighbours, 4 violate
- **CIG 532**: 30 neighbours, 1 very near (35") and violating

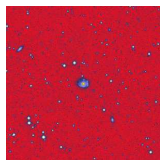
Pair candidates

AMIGA-IV 2007, A&A, 470, 505

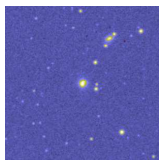
CIG galaxy with at least one companion (factor 2 in size with respect to D_p) within $5 \times D_p$:



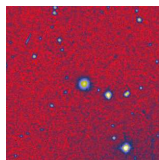
CIG 0019



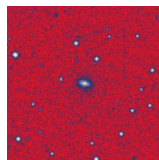
CIG 0036



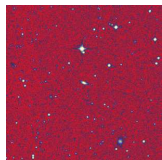
CIG 0074



CIG 0178



CIG 0233



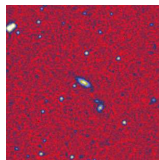
CIG 0315



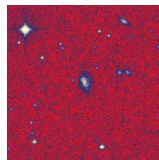
CIG 0488



CIG 0533



CIG 0683



CIG 0934

Comparison samples

AMIGA-V 2007, A&A, 472, 121

1 Karachentseva Triplets of Galaxies (KTG)

[Karachentseva et al. 1979]

2 Hickson Compact Groups (HCG)

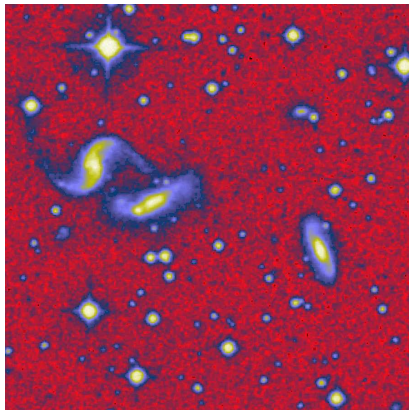
[Hickson 1982]

3 Abell Clusters (ACO)

[Abell 1958; Abell et al. 1989]

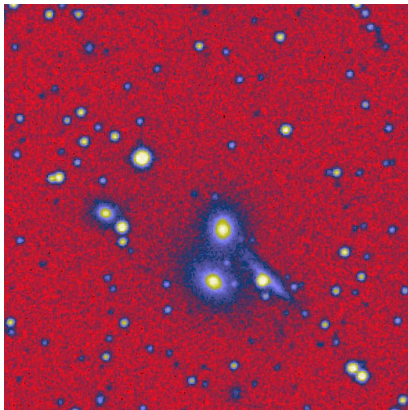
1. Karachentseva Triplets of Galaxies (KTG)

- 41 triplets selected
- primary galaxy = "A" galaxy



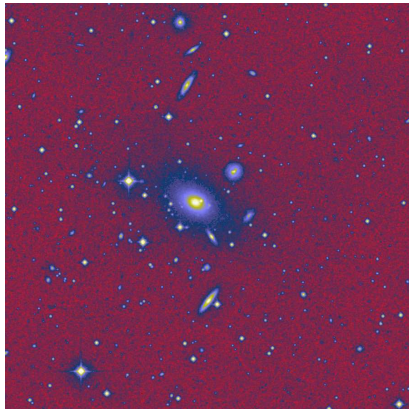
2. Hickson Compact Groups (HCG)

- 34 groups selected
- primary galaxy = "A" galaxy

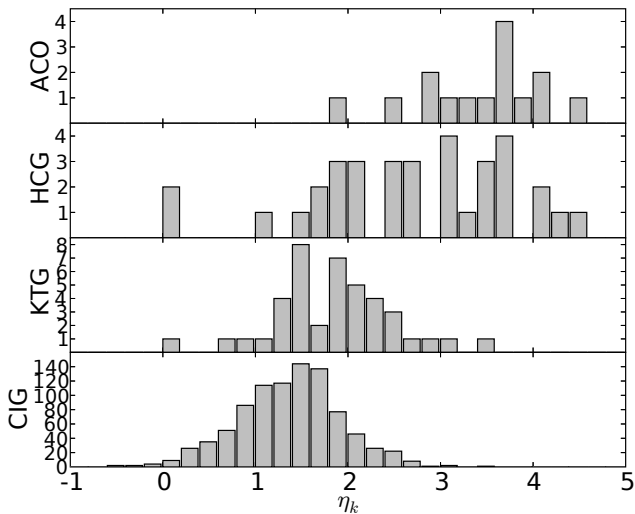


3. Abell clusters (ACO)

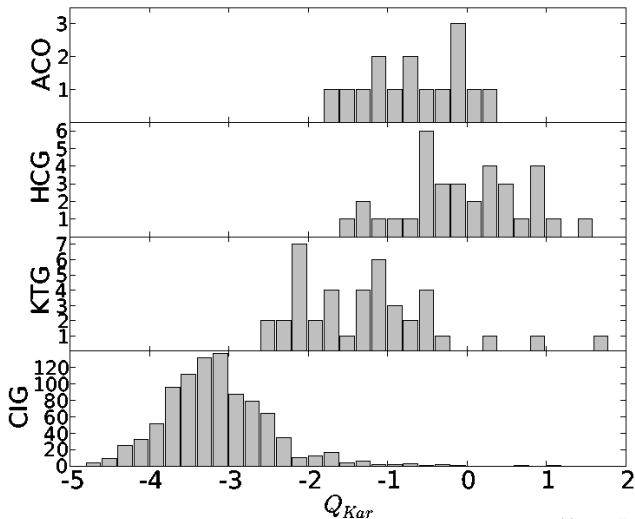
- 15 clusters selected
- primary galaxy = cD central galaxy, Brightest CG

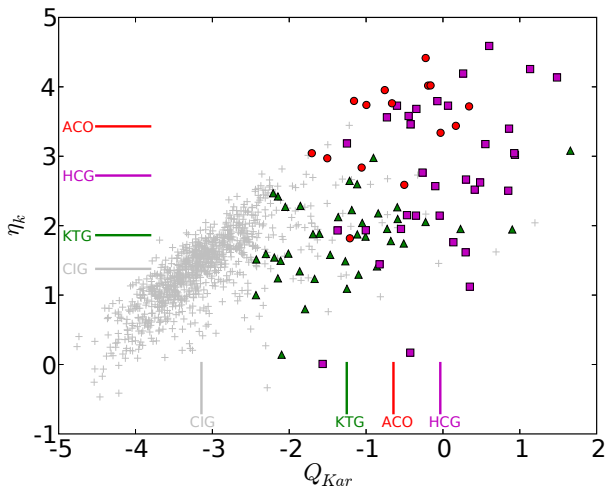


Distribution of the local number density η_k

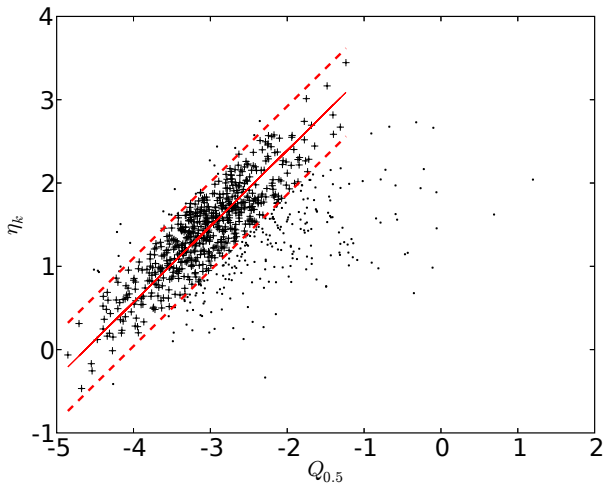


Distribution of the tidal strength Q_{Kar}

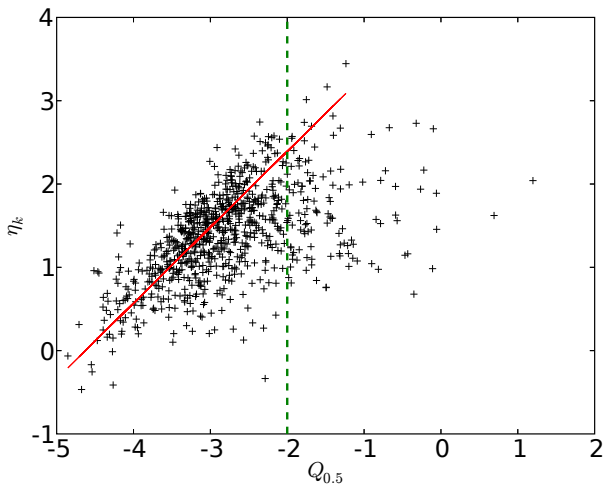


Comparison to denser samples *AMIGA-V 2007, A&A, 472, 121*

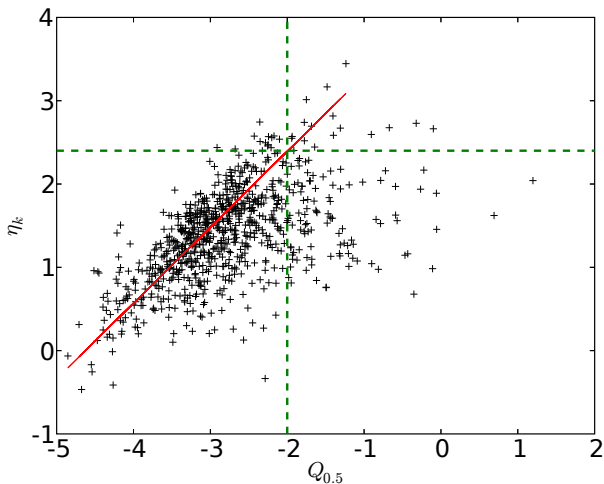
Selection of isolated galaxies

AMIGA-V 2007, A&A, 472, 121

Selection of isolated galaxies

Athanassoula 1984, Phys. Rep.

Selection of isolated galaxies

AMIGA-V 2007, A&A, 472, 121

Redshifts

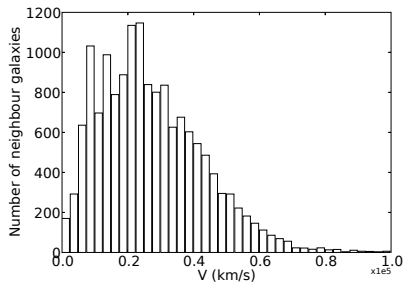
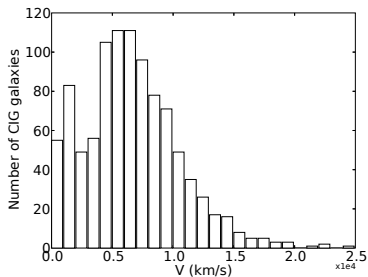
AMIGA-IV 2007, A&A, 470, 505

Database or survey	Number of redshifts	Number of matched objects	Percentage of GALAXY
NED	8024	35317	99.97%
hyperLEDA	11608	25614	99.99%
SDSS (DR3)	12166	12166	99.79%
CfA (velocity)	8864	9103	99.86%
2dF	3018	3018	-
UZC	1461	1488	-
UZC J2000	1445	1485	-
CfA2	866	866	100%
CfA1	106	106	100%
NOG2	67	67	-
SSRS2	50	50	-

16126
(29.86%)

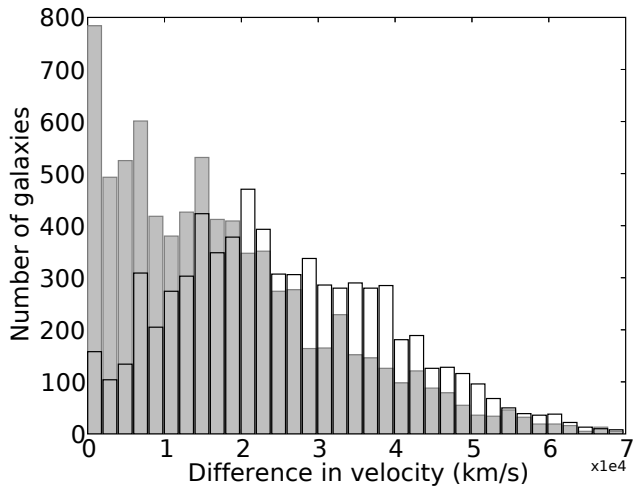
GALAXY
(99.90%)

Redshifts of primary and neighbour galaxies



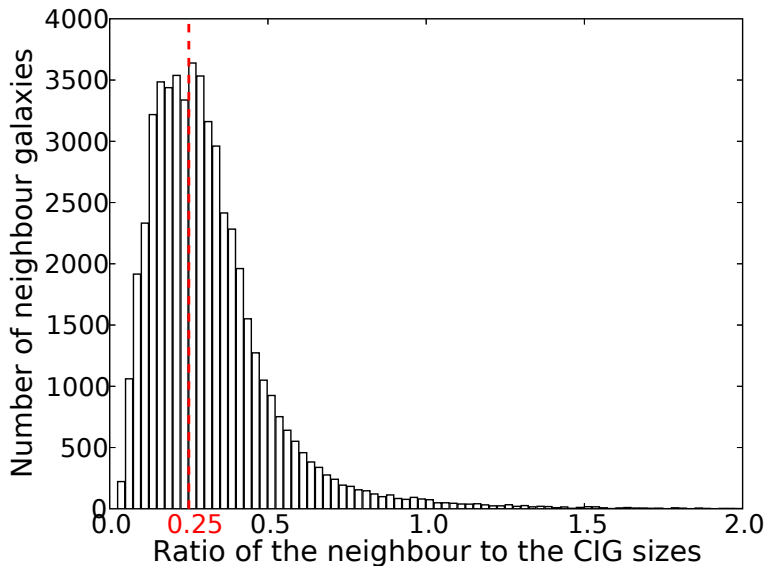
Velocity differences

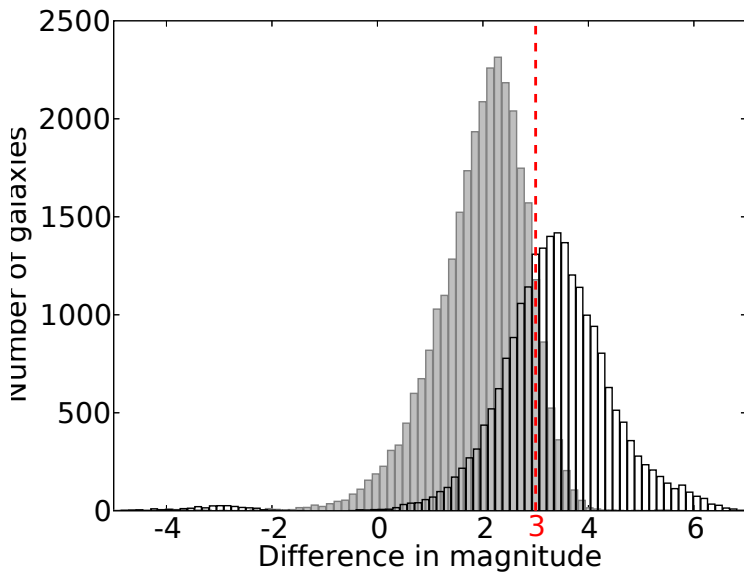
AMIGA-IV 2007, A&A, 470, 505

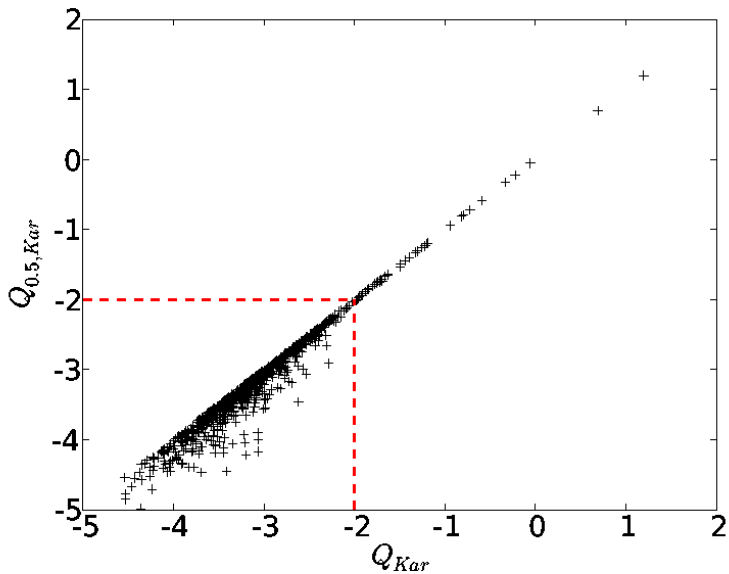


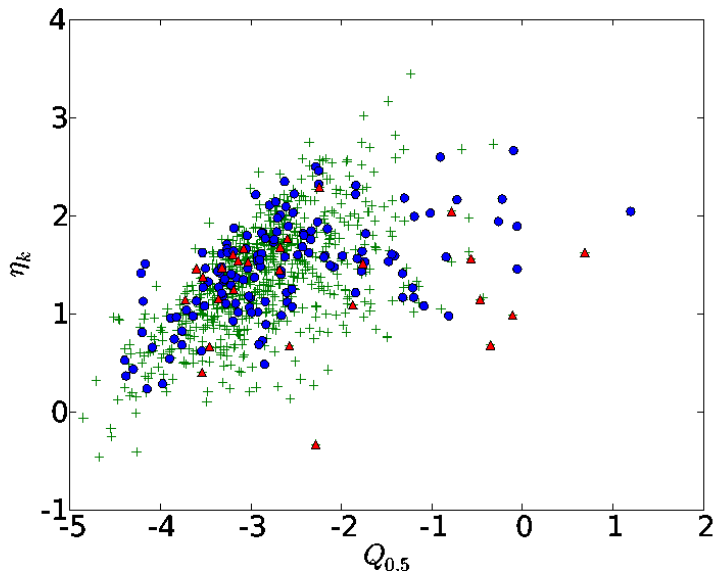
Conclusions

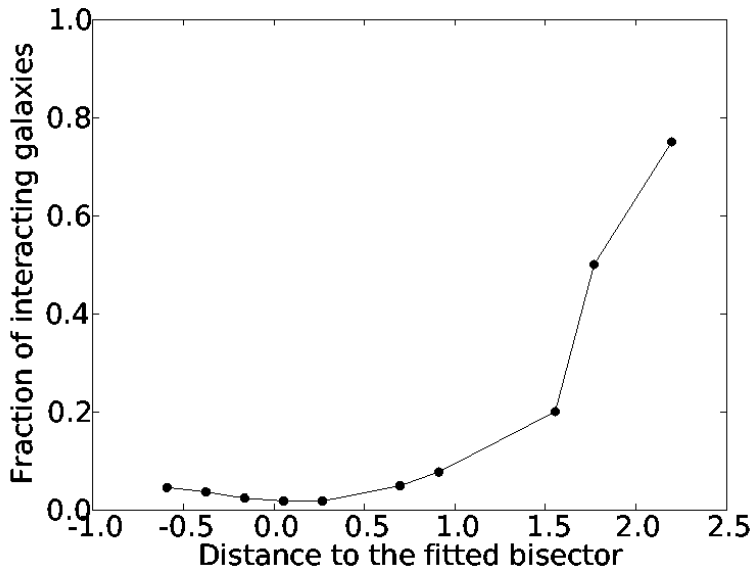
- **Computer** processing: to **detect** and **classify** sources around 950 CIG
- **Continuous isolation parameters** consistent for the whole sample
- **Complementarity** between the isolation parameters: comprehensive picture of the environment
- **Comparison** samples: KTG, HCG, ACO
- **Sensitivity** of the isolation parameters
- **Redshifts**: verification of the type (validation of our star/galaxy separation $> 99.90\%$) and partial 3-dimensional picture of the environment
- **AMIGA refined catalogue** of 791 isolated galaxies showing a continuous gradient of isolation but having their evolution dominated by their intrinsic properties





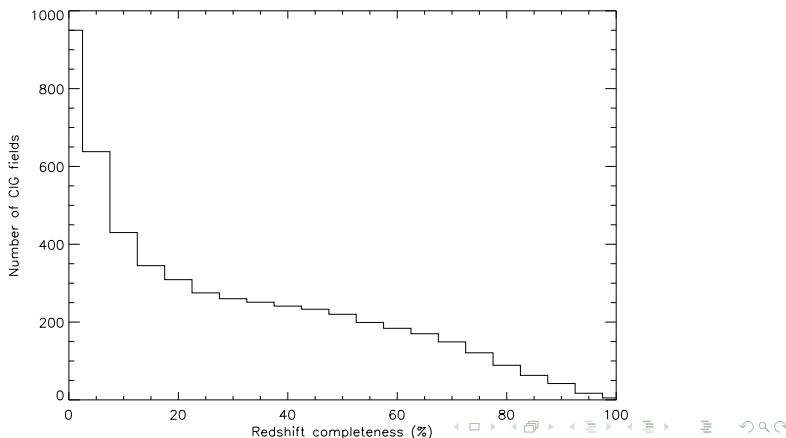






Redshift Completeness

- completeness $\leq 20\%$: 641 fields
- completeness $\geq 80\%$: 89 fields



Redshifts

Database or survey	Number of redshifts	Number of matched objects	Percentage of GALAXY
NED	8024	35317	99.97%
hyperLEDA	11608	25614	99.99%
SDSS (DR3)	12166	12166	99.79%
CfA (velocity)	8864	9103	99.86%
2dF	3018	3018	-
UZC	1461	1488	-
UZC J2000	1445	1485	-
CfA2	866	866	100%
CfA1	106	106	100%
NOG2	67	67	-
SSRS2	50	50	-

16126
(29.86%)

GALAXY
(99.90%)

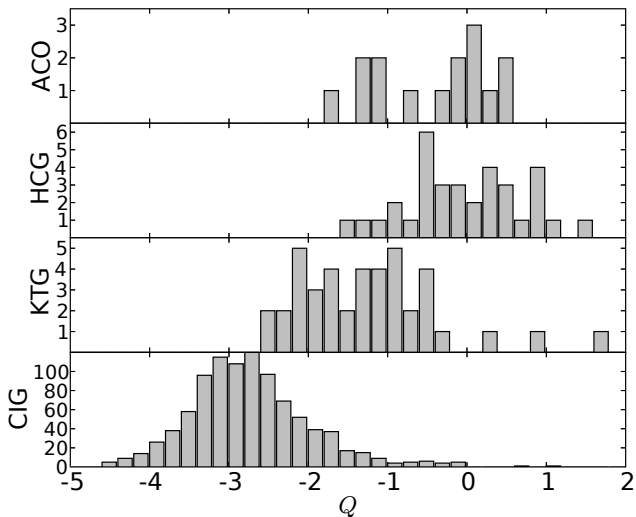
Redshifts

Database or survey	Number of redshifts	Number of matched objects	Percentage of GALAXY
NED	8024	35317	99.97%
hyperLEDA	11608	25614	99.99%
SDSS (DR6)	19031	19031	
CfA (velocity)	8864	9103	99.86%
2dF	3018	3018	-
UZC	1461	1488	-
UZC J2000	1445	1485	-
CfA2	866	866	100%
CfA1	106	106	100%
NOG2	67	67	-
SSRS2	50	50	-
	16126 (29.86%)		GALAXY (99.90%)

Redshifts

Database or survey	Number of redshifts	Number of matched objects	Percentage of GALAXY
NED	8024	35317	99.97%
hyperLEDA	11608	25614	99.99%
SDSS (DR7)	22332	22332	
CfA (velocity)	8864	9103	99.86%
2dF	3018	3018	-
UZC	1461	1488	-
UZC J2000	1445	1485	-
CfA2	866	866	100%
CfA1	106	106	100%
NOG2	67	67	-
SSRS2	50	50	-
	16126 (29.86%)		GALAXY (99.90%)

Distribution of the tidal strength Q



Karachentseva's criterion

AMIGA-IV 2007, A&A, 470, 505

- 67 fields covering $80 \times D_p$: 54 CIG galaxies isolated
- 284 CIG galaxies violating Karachentseva's isolation definition; 666 remaining isolated

